

DM-2

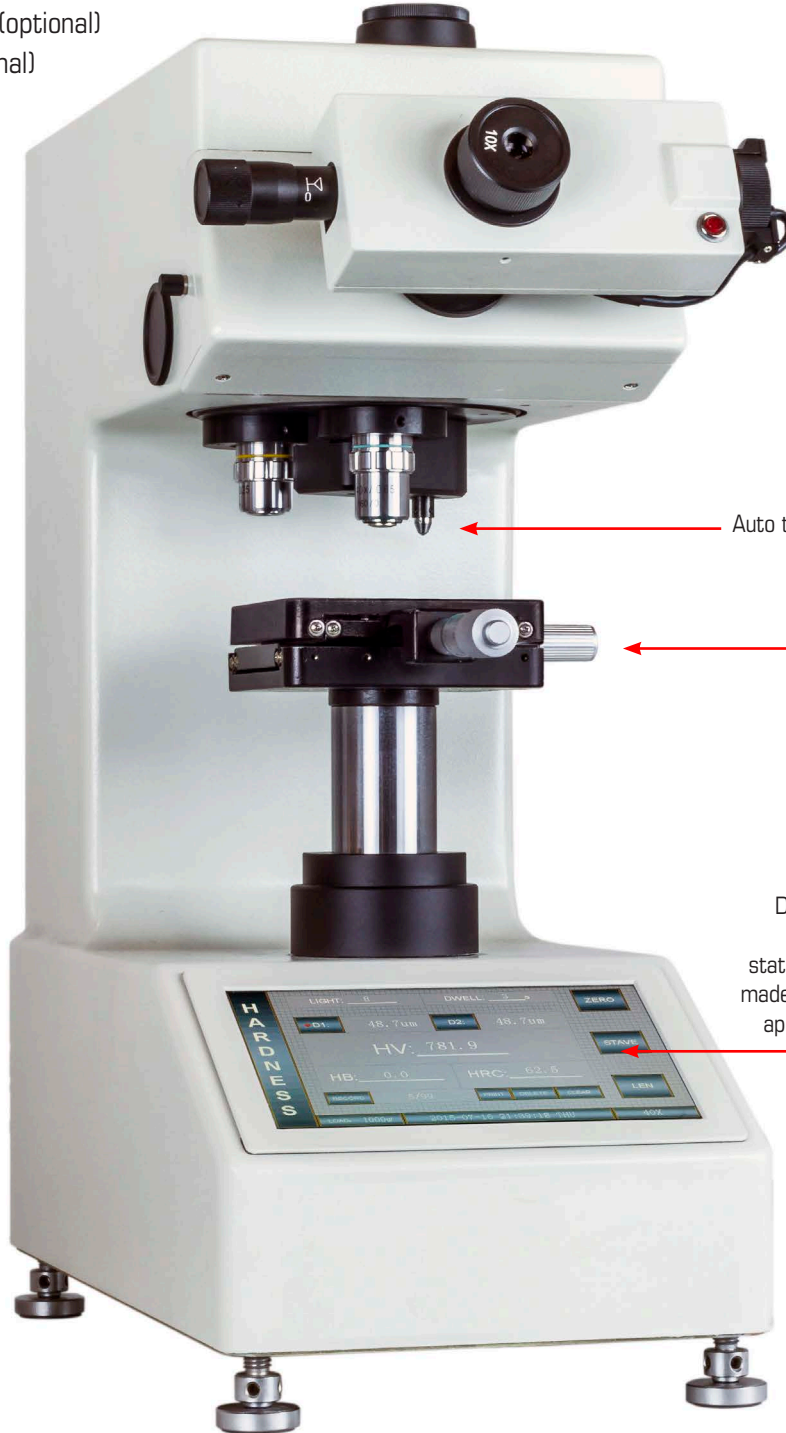
MICRO VICKERS



DM-2

- Micro hardness tester
- Auto turret
- 400x - 100x magnification
- Auto measurements (optional)
- Auto X-Y table (optional)

CCD flat camera transmits the image to the computer for fast and automatic Vickers measurements eliminates human errors, saves data, performs statistics, prints out results (optional)



Auto turret to select indenter and objective
3 or 4 step, single or dual indenters

Manual or motorized X-Y stage

Control panel integrated with ergonomic touch keyboard. 2 digit large LED indication of load force applied, Load time, Diagonal 1 and Diagonal 2, Hardness results, number of measurements stored, average, statistics. HV and HK (Knoop test) can be made using selector switch and fitting the appropriate Knoop indenter (accessory)



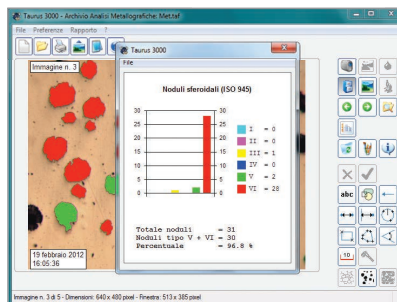
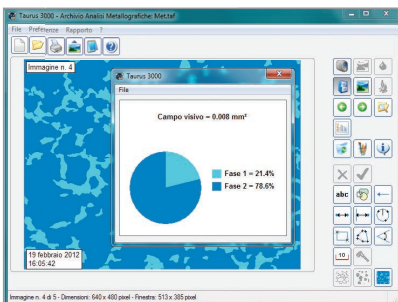
FULLY AUTO

- Camera 1,3 MP
- Auto measure software
- Auto X Y Z axis running pattern for multiple test case depth including automatic stage X-Y



SEMI AUTO

- Camera 1,3 MP
- Auto measure software



Software for metallographic analysis is free on semiautomatic system

TECHNICAL CHARACTERISTICS

	DM2 D	DM 2 semi	DM 2 auto
Action	Automatic turret, automatic loading, automatic indentation and manual measurement	Automatic turret, automatic loading, automatic indentation's measurement by camera and software	Automatic turret, automatic loading, automatic indentation's measurement by camera + auto X-Y and auto focus
Accuracy	Better than 1 %		
Temperature Range	From 10 °C to 35 °C		
Data Output	RS 232 C / USB		
Power Supply	110 o 220 V / 50-60 Hz		
Software	—	Taurus	AFFRI Fully Automatic System
Principle of Operation	Dead Weight		
Force Range	0.098 - 0.245 - 0.490 N (10 - 25 - 50 gf) 0.980 - 1.961 - 2.942 - 4.903 - 9.807 N (0.1 - 0.2 - 0.3 - 0.5 - 1 kgf)		
Feasible Tests	Vickers / Knoop		
Standards	ASTM-E384 / ISO 6507-2 / JIS B 7734		
Turret	Automatic 4 positions		
Indenter	Vickers - Knoop		
Objectives	10X, 40X		
Camera	—	1.3 MP USB2 B/W HD	
Focus and Reading	Digital manual riding	Manual focus with auto reading	Automatic and Manual (both)
Lighting	Halogen lamp		
Dwell Time	Programmable		
Screw upward movement	110 mm		
Depth Capacity	70 mm		
Table	X-Y: Manual 100 x 100 mm con passo da 10 µm		X-Y: 100 x 60 mm o 200 x 100 mm (automatico) con passo da 0.5 µm
Network	Wire connection for technical assistance auto diagnosis		
Fields Of Use	For micro and macro Vickers and case depth test on every metals: iron, steel, tempered steel, cast iron, brass, aluminium, copper and metal alloys. Heat treatment, hardening, nitriding, cementation and hardfacing. Knoop test on ceramic and glass materials		
Gross Weight	50 kg	70 kg	
Packaging Measurements	60 x 60 x 80 cm		

ACCESSORIES

- Manual X-Y stage (50 mm)	opt.	- Software for easy Vickers measure	opt.
- Precision	1	- Object lens (Built in) x10	1
- Standard test block (HMV700)	1	- Object lens (Built in) x40	1
- Diamond indenter for HV (Built in)	1	- Level adjusting leg	4
- Measuring microscope electronic type	1	- Light source bulb (LED)	2
- Automatic switching dual indenters Knoop and Vickers	opt.	- Auxiliary tools	1 set
- TV CCD Auto Measure	opt.	- Instruction manual	1
		- Accessories box	1

APPLICABLE ACCESSORIES

Optional

- Dual indenters Knoop and Vickers automatic switching
- Knoop indenter
- Knoop test block
- SEMIAUTO camera 1,3 MP and Auto measure software


OMAG di AFFRI D. S.r.l.
 Via M. Tagliaferro, 8
 I-21056 INDUNO OLONA - CEE (VA) - ITALY
 Tel. +39 0332 200546
 Fax +39 0332 203704
 info@omagaffri.com


Exclusive distributor:
AFFRI®
 Via M. Tagliaferro, 8
 I-21056 INDUNO OLONA - CEE - (VA) - ITALY
 Tel. +39 0332 201533 +39 0332 206289
 Fax +39 0332 203621
 info@affri.com - www.affri.com


America:
AFFRI Inc.
 850 Dillon Dr.
 Wood Dale, 60191 IL., U.S.
 Phone 224 374 0931 - 630 539 0117
 sales@affriusa.com
 www.affri.com